

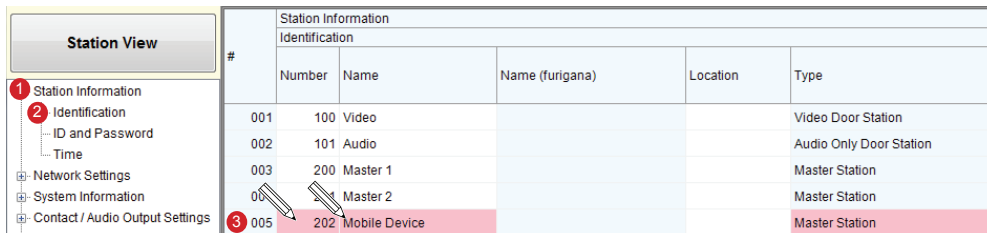
IX Mobile Installation for iOS®

The IX Mobile app turns mobile devices running iOS® 8.0 or higher into an IX Series sub master station. Follow the steps below to configure the IX Series system and to prepare the mobile device(s) for connection via WiFi or over a cellular network with a VPN connection. Please note the mobile device running the IX Mobile app and the IX Series system must be connected to the same network.

Adding a Mobile Device to the IX Support Tool

- An IX-MV master station and an RY-IP44 adaptor are required in the system for the IX Mobile App to work -
- The IX Series hardware devices must be programmed and operational prior to adding the IX Mobile device -

- Open the IX Support Tool and log in to the system being programmed.
Expand the **1 Station Information** tree and click on **2 Identification**.
On the next available line, **3** assign a Number*, Name*, and select **Master Station** as the Type for the mobile app.
Repeat steps for each instance of IX Mobile app that needs to be added to the system.

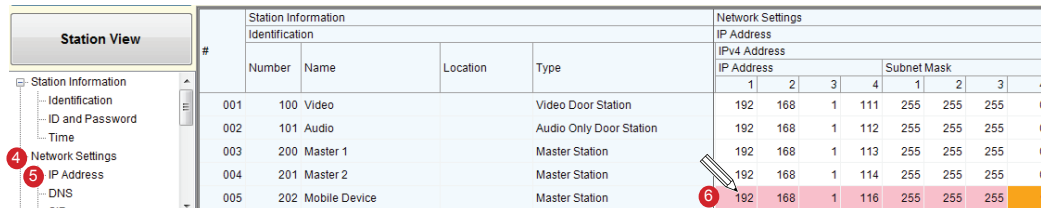


Note Station Information here to refer to later

Number	Name	IP Address
		. . .
		. . .
		. . .
		. . .
		. . .
		. . .
		. . .
		. . .
		. . .

Click the **Update** button to save changes.

- Expand the **4 Network Settings** tree and click on **5 IP Address**.
The IP Address of the added device(s) will be blank. Enter an **6** IP Address* and Subnet Mask within the same range as the other devices in the system.



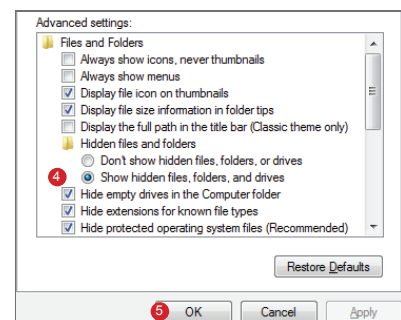
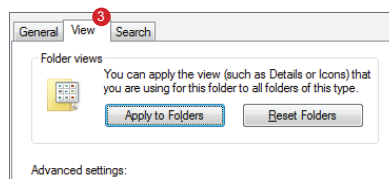
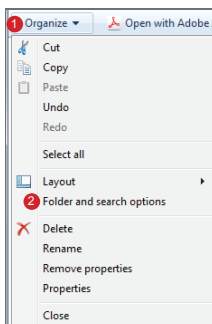
Click the **Update** button to save changes.

- Click **File**, then **Upload Settings To Station**.
Select the hardware stations from the list and click **Start Upload**. Click **OK** on the pop-up to upload the settings.

Configuration File

The IX Support Tool creates a configuration file for each device in the system and saves it to a folder within the Support Tool program folder. Once all programming changes have been made and uploaded, the configuration file will need to be copied to the mobile device.

- The folder containing the configuration file may be hidden. To show hidden folders, open Windows Explorer and click **1 Organize**. Click **2 Folder and search options**. Select the **3 View** tab and select the radio button beside **4 Show hidden files, folders, and drives** then click **5 OK**.



- Navigate to "C:\Program Files(x86)\Support Tool\System Data\(\name of system)\Setting" and select the configuration file that is associated with the mobile device. It will be identified by the Station Number that was assigned to it in the IX Support Tool. The configuration file will be transferred using iTunes®. Copy the configuration file to a location on the PC that has iTunes so it can be transferred to the mobile device.

Note: If using a 32-bit operating system, navigate to C:\Program Files\Support Tool\System Data(\name of system)\Setting

App Installation and Setup

Install the IX Mobile app from the App StoreSM.



App Store is a service mark of Apple Inc.

- 1 Connect to the WiFi network associated with the IX Series system installation. Once connected, tap on the connected network.
- 2 Tap **Static** and enter the *IP Address* that was assigned when configuring the app with the IX Support Tool.
- 3 Connect the mobile device to the PC that has iTunes installed. Open iTunes and click **Apps**. Scroll down to File Sharing and select **IX Mobile**. Click **Add File** and navigate to where the configuration file is saved. Select the file and click **Open**.
- 4 Launch the application on the mobile device. Tap the Menu icon.
- 5 Tap **Setup**. Enter the Admin ID and Password and tap **OK**.
Default ID: admin
Default Password: admin
- 6 Tap **App Server**. Enter the IP Address and Port Number for the App Server (RY-IP44). Refer to the RY-IP44 instructions for information on setting up the App Server.
- 7 Tap **Import from File**. Select the configuration file that was transferred to this device in Step 3. Tap **OK**.
- 8 A pop-up will appear stating "New configuration applied."
- 9 To unlock the app, call the mobile device from a master station in the system.

